

## Waiting for a Safe Passage

**The amendments to the Motor Vehicles Act has run into rough weather. In the interests of safety first, there must be a consensus soon.**

### FEATURE:

- EARTH MASTERS OF HILLY TERRAINS
- STRENGTHENING VERTICAL
- BUILDING WITH MODERN FORMWORK

### INTERVIEW:

- "WE SEE BANGLADESH, NEPAL AND BHUTAN AS POTENTIAL MARKETS FOR US"
- SUSTAINABILITY STARTS AT THE CONCEPT STAGE
- INFRASTRUCTURE: CATALYST FOR GROWTH



# SMART CITY CONSULTANCY:

# Planning and Implementation Approach

## Project Management Consultancy for Smart Cities

Indore got selected in the first list of Smart Cities, while Kanpur and Varanasi were included in third list and Dehradun in the fourth list. Consequently the SPVs (Special Purpose Vehicles) have been created for respective cities and the SPVs have called bids for Project Management Consultancy (PMC) from the national & international consultancy firms. After due competitive bidding, REPL got selected for the above mentioned cities.

The general approach adopted by us for as PMC consultants has been to understand and revisit the Smart City Proposals which had been submitted for these cities. During planning stage, we envisage to priorities the projects, conduct meetings with all the stakeholders involved in the project, make them aware about our requirements and expectations from each one of them, and explain our strategy and plan to develop the project in the city. Subsequently, we

provide the inputs as Quick Impact Project (QIP), short-term project, mid-term project and long-term project.

Accordingly we prepare the Situation Analysis Report (SAR), Detailed Project Report (DPR), RFP documents and bidding process. Then the implementation of the project starts after due consultations with all the stakeholders involved. The key challenges as PMC in Smart City are, revision of project concept/design/costing and bringing in good







Godowlia MLP Parking

implanting agencies for construction.

Across these cities, some of the key landmark projects prepared by us include- parks and landscaping, roads and junction improvement, integrated command and control center, design and development of Kunds, design and development of Ghats/facades, gaushala, housing, townhall development, solid waste transfer stations, open gym, public toilets, sports complex etc.

### Varanasi Smart City

The vision of Varanasi Smart City: "To rejuvenate the oldest living Indian city of Varanasi as a great place to live and visit by conserving and showcasing its enriched heritage, culture, spirituality and traditions through innovative social and financial inclusion solutions."

In the Varanasi Smart City, approach of Area Based Development (ABD) is taken, along with the pan city solutions. The plan, spreading over total 1,389 acres, will include retrofitting of old city along river Ganga comprising of major temples, heritage sites and cultural places with emphasis on socio-economic growth.

Massive citizen engagement program was undertaken to determine the priority areas.

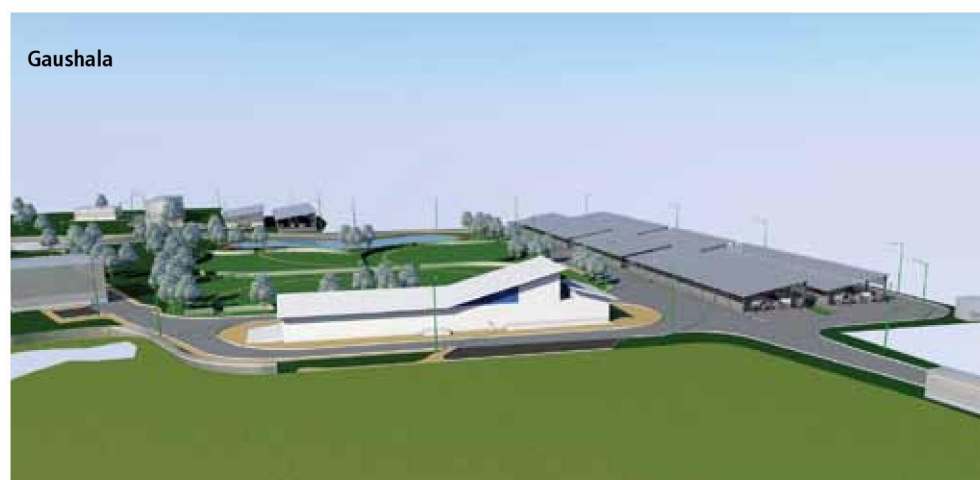
As per the priority and felt needs, selected components have been taken in first phase, on which the projects are at different stages. Some of these include:

Multi-level Two Wheeler Parking at Godowlia Chowk: Located near the KashiVishwanath Temple, Godowlia is the busiest markets of Varanasi. The streets around the GodowliaChowk are used for pedestrian movement

and parking especially by Rickshaws, motor bikes, Autos/E-Rickshaw and in absence of adequate parking facility, people often park their vehicles on the road resulting in chaos and traffic snarls.

The main objective of this 15 m high (G+3+1) conventional ML2WP is to decongest the road allowing free movement and will provide relief as optimal Utilisation of Space is achieved.

- 272 no. of Two Wheeler Parking
- 3 emergency/VIP car parking
- Public Convenience and Roof Top



Gaushala





Machodary School

Restaurant to enhance revenue generation potential

- JaIKal Office with Pump Room
  - Tourist Information Desk and Police Desk
  - Retained Existing Shops at the rear
- Macchodari Smart Senior Secondary School and Skill development center has the main objective to provide better quality of educational facilities to uplift the surrounding social strata. To make the Smart School project self-sustainable and to improve the socio-economic condition of surrounding societies by imparting skill based education to the youth, elderly, women and transgender's, a Skill Development Center has been proposed in the project.

KanhaUpvan (Gaushala) for Stray Cattle at Chhitauni Village, Varanasi. The main objective of this project is to decongest the streets from stray cattle and provide shelter for rehabilitation to the stray cattle. Gaushala includes design philosophy, zoning, engineering and detail design features along with smart components proposed. Proposal accommodates the following:

- Shelter to 450 Cattle
- Administration and Hospital Building to prescreen, diagnose and treat sick cattle.
- 180 Cum capacity of Bio-Gas Plant and composting chamber

- Dedicated calf shed, Fodder shed, Residential Quarters for Staff
- Grazing Ground with local grass.

All proposed structures are a combination of Prefab Structures and Steel structure, which shall be light weight and can be disassembled conveniently.

#### Design Viability

The whole complex will be a sustainable complex running on solar power. The cow waste will be used in the bio gas plant to create natural gas that will be used on site and the residue compost from the bio gas plant will be used by the farmers for organic farming.

The model for adopting and implementing energy generation through solar power may be developed with 2 options:

- Supply, commissioning, installation and operation of solar panels by taking the entire cost in the project cost of the project.
- Solar panels will be provided free by the agencies. The agencies will provide required amount of power in the complex on subsidized rates and sell leftover amount to the grid.

Cow adoption strategy will be adapted in the Gaushala. The tourists visiting the Gaushala will have an option of adopting any cattle they wish

to and for that they will pay a nominal/ apt amount periodically or one time for taking care of that cattle.

The similar kind of approach is taken in other smart cities being handled by REPL. The need of every city is unique and hence the specific solutions are required to make them smart living space.

**Indore Smart City:** The Indore Area Based Development (ABD) proposal spreads across a contiguous land parcel, comprising of a total area of 742 acres, having a population of 1.2 Lakhs.

**Kanpur Smart City:** According to the agreement, the core 1475 acres of ABD area and Pan City Projects identified to be developed under the smart city.

**Dehradun Smart City:** Dehradun's area based development (ABD) envisions to retrofit and redevelop 875 Acres centered on CBD of Dehradun and transform into a light-house for the city and to showcase as a smart neighborhood. ■



Authored by  
Harish Sharma  
Chief Business Officer  
and Operations - REPL  
Rudrabhishek Enterprises Ltd