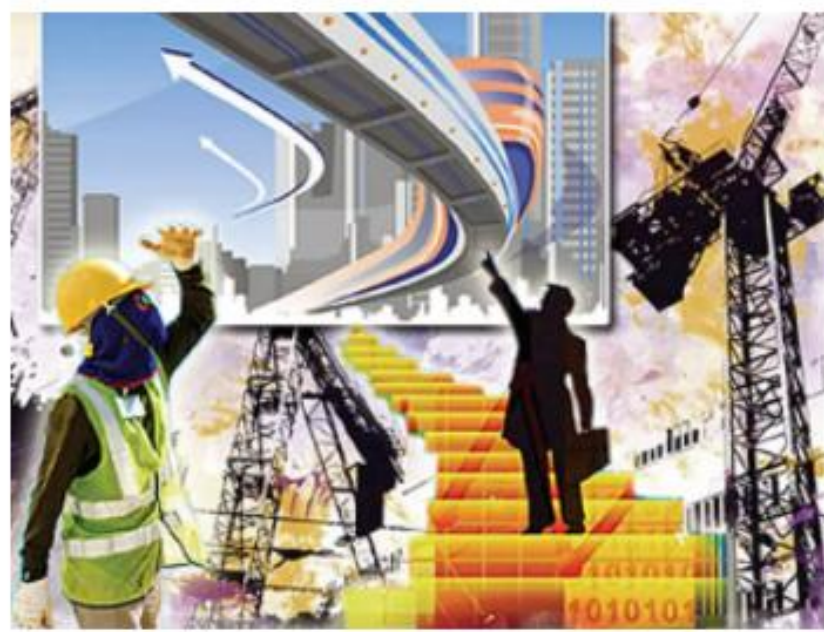
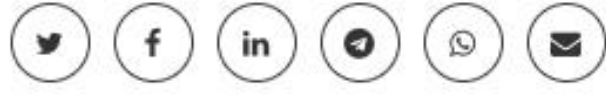


REPL secures multiple orders from state governments of Assam, Uttarakhand and Odisha

For Assam, REPL's subsidiary, Rudrabhishek Infosystem (RIPL) will provide the consultancy for preparation of city street vending plans for 24 districts in two phases for Assam State Urban Livelihoods Mission Society (ASULMS), which includes facilitating access to suitable spaces for vending, institutional credit, improved skills and social security linkages.

ETGovernment • March 03, 2021, 19:34 IST



REPL

Delhi based infrastructure consultancy firm **REPL** announced that it has bagged three different orders from the state governments of Odisha, Assam, and Uttarakhand. The company has received projects for architectural and engineering consultancy for Eklavya Model Residential Schools in Odisha, **street vending plan** in Assam and GIS

based master plan for Haldwani, Uttarakhand.

REPL will provide architectural and engineering consultancy services for construction of 11 Eklavya Model Residential schools in Mayurbhanj district of Odisha for Hindustan Steelworks Construction Limited. The project cost is approximately ₹319 crore.

For Assam, REPL's subsidiary, Rudrabhishek Infosystem (RIPL) will provide the consultancy for preparation of city street vending plans for 24 districts in two phases for Assam State Urban Livelihoods Mission Society (ASULMS).

This project will address the concerns of urban street vendors by facilitating access to suitable spaces for vending, institutional credit, improved skills and social security linkages. After completion, the public will also experience good pedestrian access, parking space and improved civic amenities under this development plan.

REPL will prepare GIS-based master plan of Haldwani under AMRUT scheme with design standards of National Urban Information System (NUIS) for State Mission Directorate of Uttarakhand. The preparation of the master plan will include aspects of employment generating activities, industries, retail and malls, educational facilities, medical facilities and several other community facilities.

Pradeep Misra, CMD-REPL said, "The pace of development which our country is witnessing is remarkable and we intend to participate through our expertise. Our experience of handling various critical projects across the infrastructure sector will enable us in executing these projects with greater efficiency. Modern approach by bringing the latest technologies and implementation strategies will help us to deliver the best of the outcome in the given time frame towards successful integrated urban development."

REPL is working on many infrastructure and planning projects for both the state and central governments pan **India** including **Smart Cities**, **PMAY**, BIM consultancy for Chennai Metro, GIS-based master plans, water supply system, street vending plans, online building plan approval system etc.

Presently, the company has a work order of more than ₹370 crore in hand. The geographical reach of the company has also increased with ongoing projects spanning across all parts of the country.

Rudrabhishek Enterprises Limited (REPL), with a standing of more than 28 years, has become an established brand in the domain of urban development and infrastructure consultancy. Listed on the **National Stock Exchange (NSE)**, REPL is an ISO 9001:2015 certified organization for quality management in services.

The group has successfully planned and delivered complex assignments of diverse nature such as residential, commercial, group housing and integrated township projects, hospitals, hotels and recreational facilities, water supply, sewerage and sanitation systems, regional plans and master plans.

REPL is extensively associated with the government of India's flagship programs such as Smart Cities, PMAY, AMRUT, NULM, Jal Jeevan Mission and Skill India Mission at multiple locations under various capacities. "Our strength lies in integrating a range of services and providing end-to-end solutions to the clients. Providing customized, technologically advanced, innovative, and yet cost-effective solutions are REPL's trademark approach," the company said.