

INTEGRATED URBAN DEVELOPMENT &
INFRASTRUCTURE CONSULTANTS

WE PLAN...
WE DELIVER...



VISION

To be the most endorsed integrated urban development & infrastructure consultants

MISSION

Facilitate best living conditions by designing buildings and infrastructure that are proudly inherited by coming generations

CORE VALUES



QUALITY QUINTESSENTIAL

Strive for delivering the best standards of services by following stringent quality management protocols and processes.



TIMELINESS

Pay special attention on delivering within a time frame. Fulfill promises of quality and timely delivery of services, far beyond the commitments.



INNOVATIVE EXCELLENCE

Invest in keeping ahead of technological excellence and new innovations.



TRANSPARENCY

Work as a trusted and reliable partner to our clients; deliver services with utmost integrity and transparency.



ENVIRONMENT FRIENDLY

Contribute to the planet by working in an environmentally responsible manner with utmost focus on "Reduce, Reuse and Recycle". Build responsibly, use sensibly.



SOCIALLY RESPONSIBLE

Work as a responsible corporate citizen and give back to the society with a special contribution towards education for the underprivileged.

REPL: In a Nutshell

30+ Years of Legacy

Established urban development & infrastructure consultant offering integrated services.

Listed on NSE

REPL is listed on country's largest stock exchange NSE.

300+ Consultants

Architects, Infrastructure Experts, Engineers (Structure & MEP), Urban Designers/Planners, GIS Experts, Project Managers, Financial/Contract Specialist.

Group Company

Rudrabhishek Infosystem Pvt. Ltd. (RIPL)

ISO Certifications

ISO 9001:2015
ISO/IEC 27001:2013

30+ Empanelment

Government departments & agencies in infrastructure and urban planning domain.

Strong Partnerships

Graphisoft



RIPL has associated with Graphisoft (Hungary) for exclusive partner for distribution of BIM application software Archicad in North and NE states. We also working for training of industry professional.

TeamSystem S.p.A



RIPL is associated with TeamSystem S.p.A (Italy) for promotion and distribution of software TeamSystem Construction in India.

Simcon



RIPL is associated with SIMCON (Germany) for promotion and distribution of CADMOULD software (Injection Molding Simulation) in India.

Bricsys



RIPL & Bricsys (Belgium) alliance for promotion and distribution of BricsCAD software (Mechanical and Civil Design) in India.

CGS Labs



RIPL is associated with CGS Labs (Slovenia) for the promotion and distribution of infrastructure design software (Road, Railway and River Engineering) in India

When knowledge integrates with performance, WE CREATE

About us

Rudrabhishek Enterprises Limited (REPL), with a legacy of more than 30 years, has become an established brand in the domain of Urban Development & Infrastructure Consultancy. Company's strength lies in integrating a range of services and providing end-to-end solutions to clients.

REPL has successfully planned and delivered complex assignments in diverse sectors such as Smart Cities, Planning, GIS Mapping, Feasibility Studies, Water Supply Infrastructure, Sewerage & Sanitation Systems, Highways, Metro Rails etc. In urban development, the Group has successfully planned, designed and delivered projects related to hi-tech cities, integrated townships, commercial complexes, group housing, hotels, hospitals & recreational facilities. REPL is extensively associated with Government of India's flagship programs such as Smart Cities, PMAY, NULM, JJM, AMRUT, PMGSY & Skill India at multiple locations.

REPL, has pool of in-house experts with formidable credentials in Infrastructure, Planning, GIS, Architecture, BIM, Interior Design, Structural Engineering, Services Design and Project Management. Company's engineering & design solutions are known for innovations, technology applications and quality deliverance.

A number of group-companies, joint-ventures, strategic partnerships, empanelment with government agencies and broad client base are testimonies of our growth story. REPL is ISO 9001:2015 and ISO/IEC 27001:2013 certified organization. Company is headquartered at New Delhi with pan India presence.



Mr. Pradeep Misra
Chairman and Managing Director

A forward thinker, Mr. Misra saw the immense potential of the infrastructure domain. He clearly understood that a huge demand-supply gap existed in the industry and there was a need for an integrated player. It was in this context that he founded REPL.

Integrated Services



Diversified Sectors



Smart Cities



Scheme of Bhopal Smart City



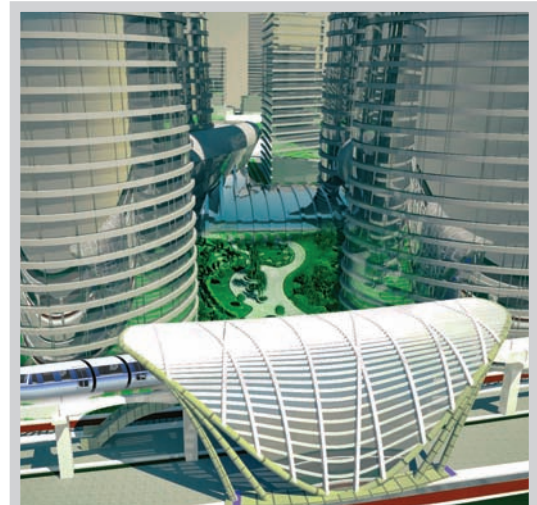
Rajwada & Heritage Walk, Indore Smart City



Proposed Dr. Sampurnanand Stadium,
Varanasi



Clock Tower,
Dehradun



Transit Oriented Development,
Bhopal



Park & Pond Redevelopment
Beniyabagh, Varanasi



Smart School,
Varanasi



Collectorate Building,
Dehradun



Road & Junction Improvement,
Kanpur

Smart City Projects

Project Management & Development Consultancy for Smart Cities on ABD (Area Based Development) and Pan City solutions. Design, develop, implement and manage the entire project with various components viz. integrated command control center, water supply system, intelligent traffic management, roads & junction improvement, smart security, heritage conservation, e-governance, ICT solutions etc. Includes DPR preparation of various public facilities such as schools, parks, multi-level car parking, sports complex, administrative buildings and health centers.

Overall development of cities for sustainable growth, livability, employment, industrial activities, better governance and ecological balance.



1389 Acres



742 Acres



1475 Acres



875 Acres



1260 Acres



270 Acres



743 Acres



Phase II, Package 2



UGSS Project



348 Acres

Infrastructure

DPR for Water Supply Schemes

- 20 ULB's in M.P. under AMRUT 2.0.
- Bundelkhand region of UP for more than 1400 villages.
- 5 Towns of Uttarakhand.
- Simdega Urban Area and Godda Nagar Panchayat of Jharkhand.
- Rural water supply schemes for 4 districts in Chhattisgarh; 7 Districts in M.P.; 177 schemes in Assam under Jorhat & Nazira Division; 193 schemes in Uttarakhand under Dehradun, New Tehri and Devprayag.
- Pollution abatement for 4 Towns adjoining Narmada River under National River Conservation Plan.
- Water Supply System for Benipur, Samastipur, Madhubani and Darbhanga Towns in Bihar.
- DPR for water supply scheme in Katwa & Jalpaiguri, W.B.

DPR for Sewerage Schemes

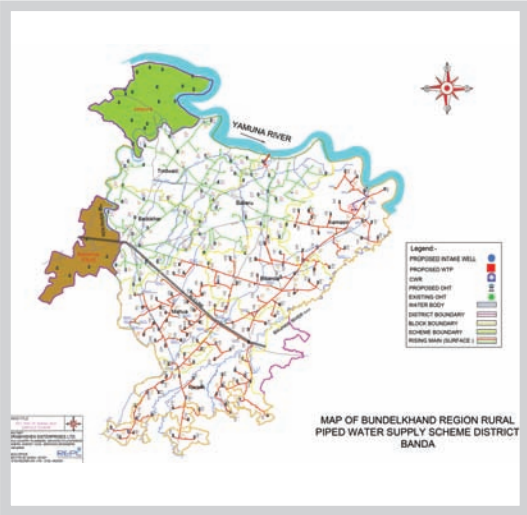
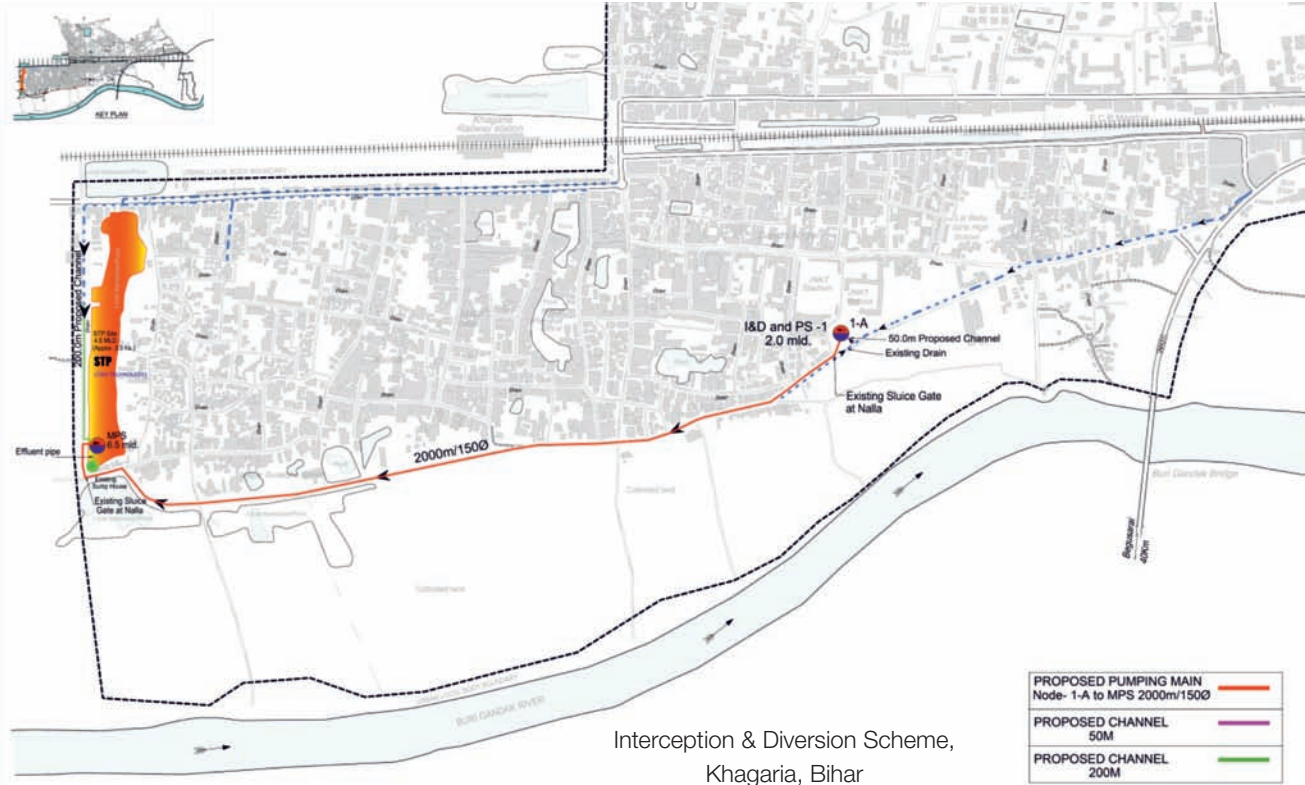
- Sewerage Master Plan for Lucknow, Bareilly & Anoopshahr in U.P.; Thiruvananthapuram; Sanchi, Maihar & Shahdol of MP.
- Interception & Diversion alongwith STP Scheme in 5 towns, Bihar (under National Mission of Clean Ganga).
- Storm Water Drainage & Rain Water Harvesting System in Modipuram, Meerut, UP.
- Sewerage System & Waste Water Management for Mandsaur City, MP.
- Sewerage System for Benipur, Samatipur, Madhubani Towns in Bihar.

TPI / PMC

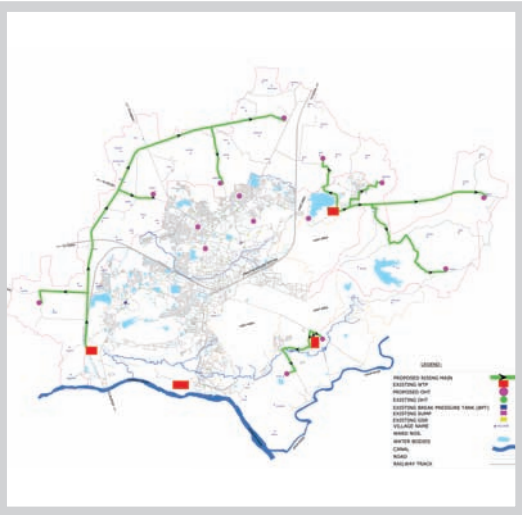
- TPA of last mile access projects under Bharat Net for 40,000+ gram panchyat in 17 state & UT
- Interception & Diversion along with STP Schemes in 5 towns of Bihar.
- Madia & Madikheda multi-village water supply schemes of MP Jal Nigam.
- 10 districts in Jammu Province for approx. 1800+ schemes.
- Road, Bridge and Building works in Ladakh.
- Bina Khurai & Malthone Multi Village Scheme, M.P
- Implementation of Rural Water Supply Scheme in 6 Blocks of Bhubaneswar and 7 Blocks of Balasore, Odisha

AE / PMC

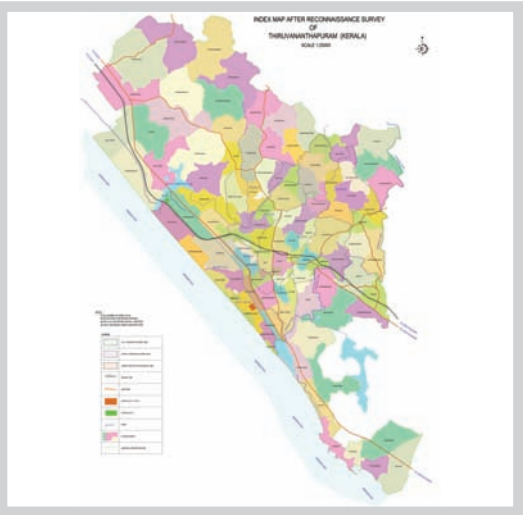
- Stretch of 50,543 km of National Highways in Manipur.
- Several Urban Road projects in multiple cities.



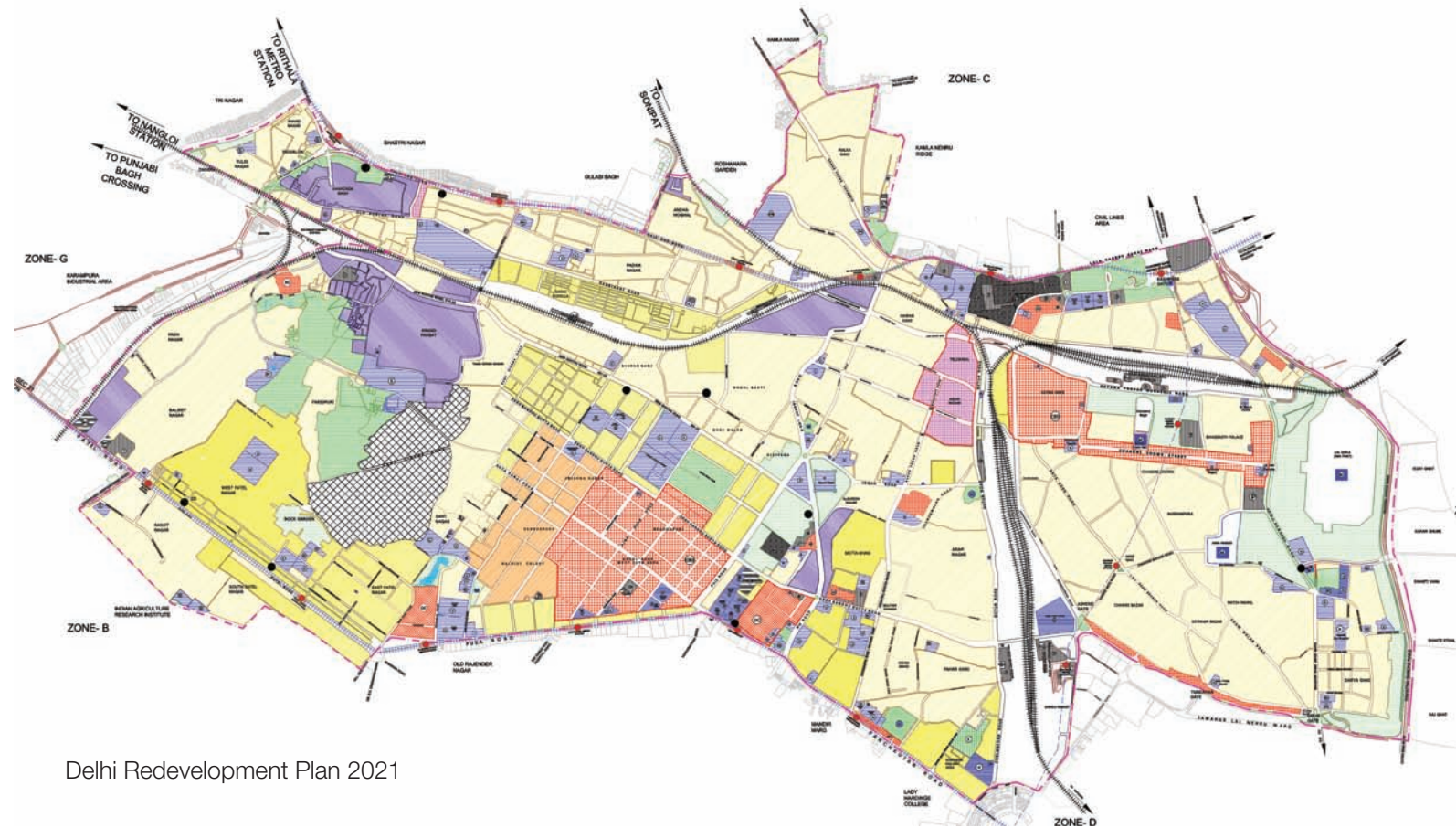
Water Supply Scheme, Banda
Uttar Pradesh



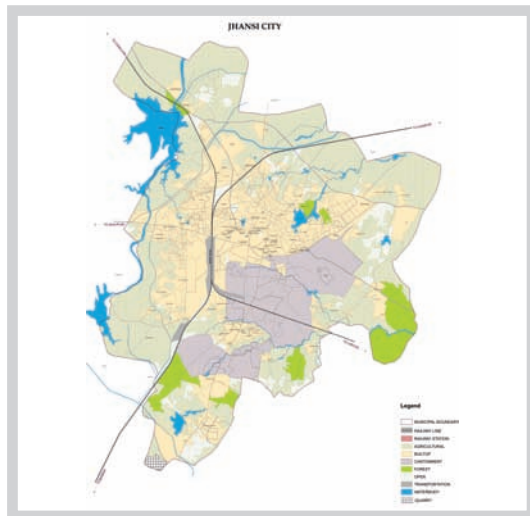
Jabalpur Water Supply Scheme,
M.P.



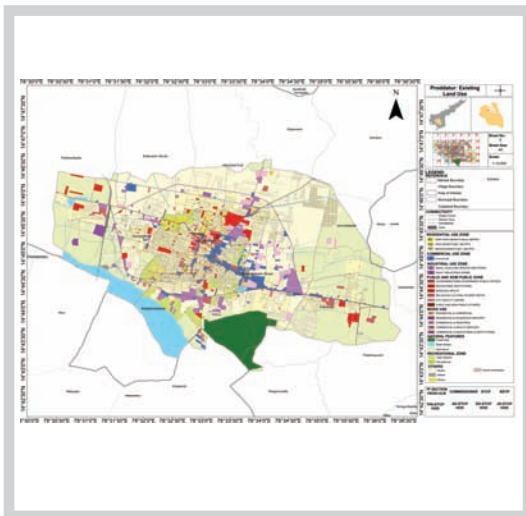
Sewerage Management System,
Trivandrum



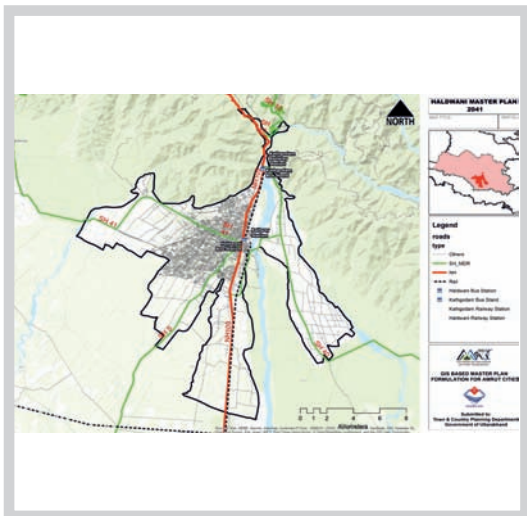
Delhi Redevelopment Plan 2021



Street Vending Plan,
Jhansi



GIS Based Master Plan,
Proddatur, A.P.



Haldwani Master Plan 2041,
Uttarakhand

GIS

Indicative Projects

Vetting of GIS Base Maps, Jammu

Vetting of draft based maps and attribute data collection for Jammu under AMRUT. The work includes accurate common digital geo-referenced base maps and land use maps using GIS. Project will enable authorities to make more informed strategic decisions.

GIS based property tax register, Katni, M.P.

Project includes large-scale GIS based ground survey and allotment of unique identification number. This project will help in the improvement of revenue collection, financial planning and improvement in management capacity of the Municipality through provisions of valid, reliable, and credible spatial and non-spatial information.

GIS Mapping in Greater Noida Master Plan 2041

Review of the existing plan along with situation analysis, vision planning, stakeholder's consultation, draft perspective plan, master plan, zonal development plans, zoning regulations and action plan.

GIS mapping in Delhi Redevelopment Plan 2021 2,600 Hectare

Preparation of GIS base map, study & analyze the socio economic infrastructure, heritage conditions, prepare strategies and policies for redevelopment plan.

GIS Based Master Plan for 14 ULBs in Andhra Pradesh 73,000 Hectare

Existing situation analysis, strategy formulation for vision 2041, GIS base map with zoning regulations, assisting authority in notification and finalization.

GIS mapping in Industrial Corridor Dhuriyapar, Gorakhpur, U.P. 2300 Hectare

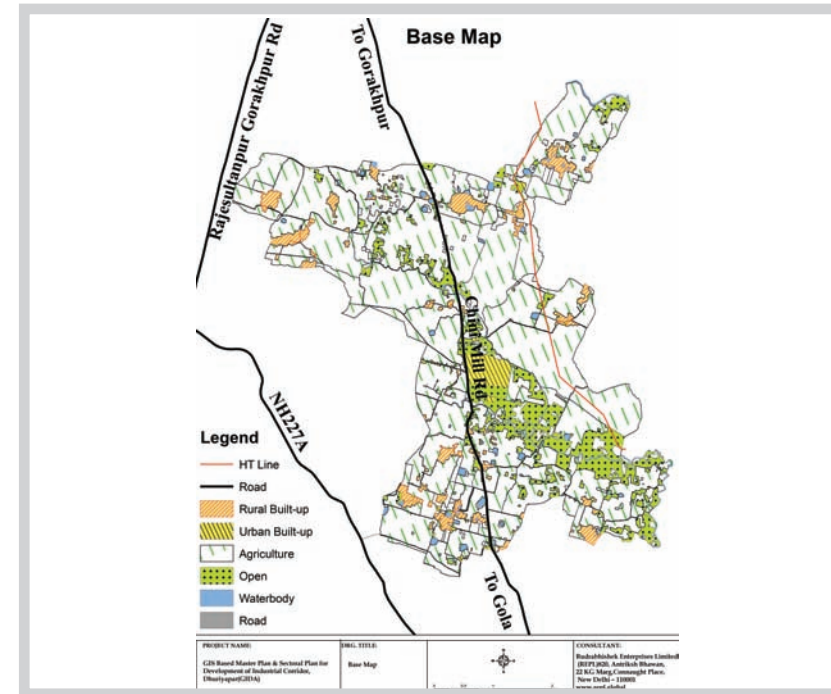
GIS based master plan, study of internal & external infrastructure, development of sectoral plans & project structuring.

GIS based Master Plan 2041, Uttarakhand (Clusters 3,4,5 & 6)

Existing situation & demand assessment, identification of issues, Vision 2041 and Strategy formulation , draft Master Plan including detailed zoning regulation for 37 ULBs, development control and disaster management planning through technological interventions

City Street Vending Plan: Jharkhand, Assam, Haryana, U.P. & Punjab

Project includes identification of street vendors, preparation of city level GIS mapping, vendor census survey, biometric identification, web enabled MIS system and detailed implementation plan. Covering over 1 lakh vendors in various districts of 5 states.



Industrial Corridor,
Dhuriyapar, U.P.

Planning

Sub-Regional Plan 2021 for NCR, U.P.

10,80,000 Hectare

Formulate new sub-regional plan for new areas falling in NCR namely Meerut, Gautam Buddha Nagar, Ghaziabad, Bagpat and Bulandshahr districts.

Master Plan for 5 towns in Himachal Pradesh

4,100 Hectare

Satellite imagery base map, survey and preparation of policy framework, guidelines and regulation.

Haldwani Master Plan 2041, Uttarakhand

Existing situation & demand assessment, identification of issues, vision 2041 and strategy formulation, draft Master Plan including detailed zoning regulations and development control.

Greater Noida Master Plan 2041

Review of the existing Plan along with situation analysis, vision planning, stakeholder's consultation, draft perspective plan, master plan, zonal development plans, zoning regulations and action plan.

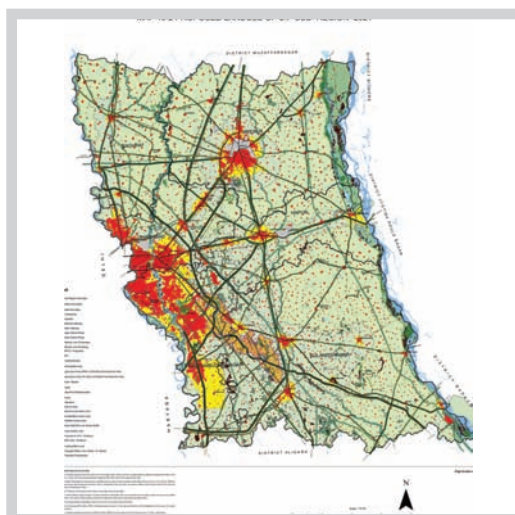
Master Plan for 5 Towns in Odisha

62,000 Hectare

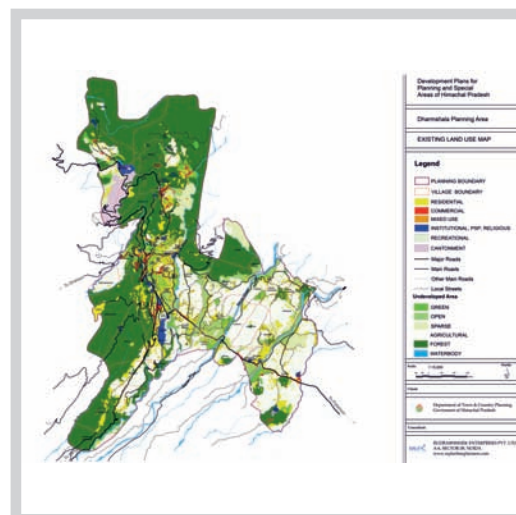
Preparation of GIS base map with all existing features, propose land use plan, analysis of socio-economic, infrastructure and other aspects, identify development potential and zoning regulations.



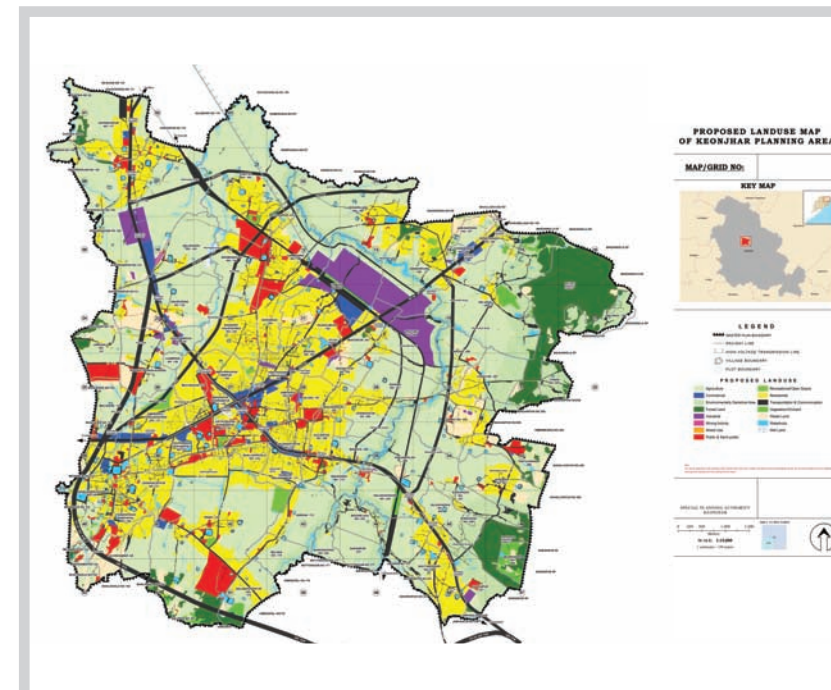
Proposed Layout Industrial Area,
Morena, M.P.



Sub-Regional Plan 2021,
NCR, U.P.



Master Plan
Dharamshala, H.P.



Master Plan
Keonjhar, Odisha



Bindal Riverfront,
Dehradun

Planning

Indicative Projects

Riverfront Development, Dehradun

Preparation of infrastructure development plan with block estimate & financial model. Scope of work includes land parcel identification, techno-economic feasibility and draft feasibility with concept design for Rispana and Bindal river bank.

Tourism Development Jammu

Consultancy for development of 37 tourism site in Jammu province to streamline various facilities for enhancing tourism and tourist convenience in the city.

Online Building Plan Approval System (OBPAS), U.P.

An automated single window system that facilitates hassle-free scrutiny and approval of building plans. It provides ICT enabled services to citizens, architects and authority representatives.

PMAY : U.P. & Pune

Project includes door-to-door survey, DPR, MIS entry, beneficiary-wise detailed report, construction monitoring, geo-tagging of beneficiaries and development of implementation portal. We are providing DPR & PMC services for 128 towns in U.P. and 9 talukas in Pune.

City Development Plan, Meerut

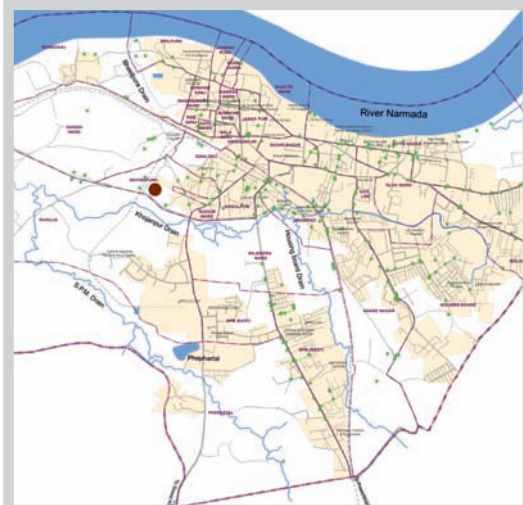
Preparation of vision, implementation strategy & integrated infrastructure plan. Formulating implementation strategy & preparation of Spatial-Economic development strategy for both Brownfield & Greenfield development.

Development of New Industrial Area Pahadi, District Morena, M.P. 200 Hectare

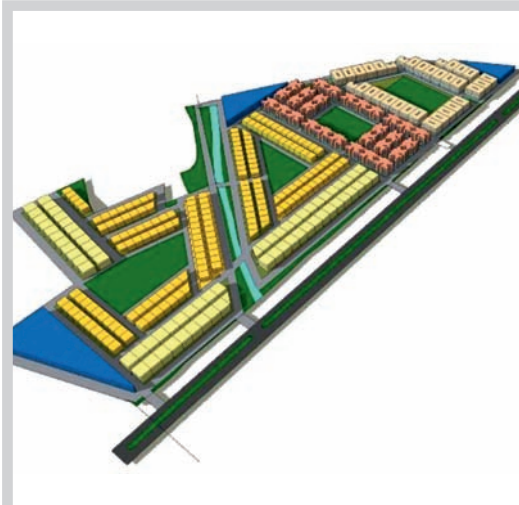
Market study & demand assessment, development of external & internal infrastructure, preparation of a bankable DPR, preparation & evaluation of bid documents.

Industrial Corridor Dhuriyapar, Gorakhpur, U.P. 2300 Hectare

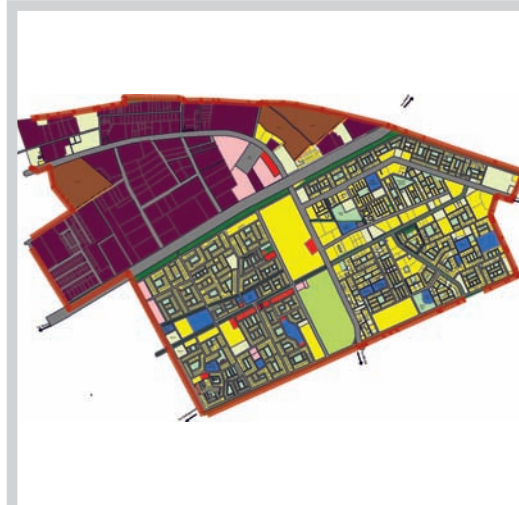
GIS based master plan, study of internal & external infrastructure, development of sectoral plans & project structuring.



City Sanitation Plan,
M.P.



HFAPoA for 2 towns,
M.P.



GIS Mapping,
Delhi-Ghaziabad-Meerut Corridor

Hi-Tech Townships

REPL has cross functional teams to efficiently deliver the consultancy on Hi-Tech Townships, which includes developing and designing the layout plans. Infrastructure services such as sewerage, drainage, water supply, rainwater harvesting, roads, electrical sub-stations, traffic design, feasibility reports, GIS mapping, DPRs etc.

Indicative Projects

Megapolis Hi-Tech City, Dadri

1,000 Hectare

Complete documentation drawings and designs, as required under policy including the master plan for the Hi-Tech City. Based on field layout plan, the DPR was prepared. Land related documents and ownership documents were submitted to the concerned authorities for approval. In addition to infrastructure services, it also included detailed architectural design for row housing, individual housing & group housing.

Sushant Golf City, Lucknow

1,890 Hectare

This project consists of the parent city and its two extensions. Prepared master plan, concept layout, and a final layout plan detailing areas of various sub-divisions proposed and sealable area. Also prepared all drawings, layout and documentation required for submission to the Lucknow Development Authority. We prepared detailed infrastructure designing (water supply, drainage, sewerage, electrical etc.) and also architectural design for approx. 800 units. Consultancy entailed other activities such as preparation of BOQ, tender documentation, structure & services design etc.

Wave City Hi-Tech Township: Phase 1 & 2, Ghaziabad

2,800 Hectare

Conceptual planning and detail phase-wise planning. Consultancy involved submission of feasibility report & DPR. DPR included land acquisition strategy, planning infrastructure and services (roads, water supply, sewers, electrification and telecommunication), solid waste management, financial statistics, projects maintenance etc.

Hi-Tech City, Allahabad

620 Hectare

Project involved preparation of Master Plan, DPR, designing of all services including estimates, BOQ, rate analysis, tender documents, designing of electrical distribution etc. There is effort to impart state-of-the-art office complexes, special entertainment zones, educational institutes, health club, supermarkets, hospitals and everything that one can get in a metropolitan with revitalizing greens. This township has a speciality of having a water body at the front side.

Suncity Hi-Tech Township, Ghaziabad

700 Hectare

Location specific concept plan, DPR preparation with internal and external infrastructure, design water infrastructure and detailed drawings for Electrical Distribution System.

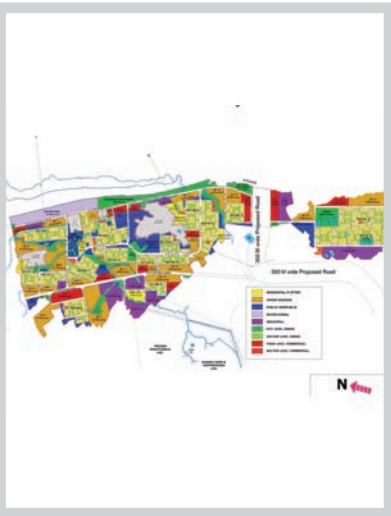
Sushant Golf City, Lucknow



Ansal API Megapolis, Dadri



Wave City Hi-Tech Township, Ghaziabad



Hi-Tech City, Allahabad



Suncity Hi-Tech Township, Ghaziabad



Paarth Republic

Building Design

REPL's Building Design Service comprises of site planning, architecture, BIM, landscaping, structural engineering, MEP Services design and Project Management Consultancy (PMC).

Indicative Projects

**Velocity Mall,
Lucknow**
7,99,000 sq. ft

Single-stop destination for automobile industry, having facilities of purchase & exhibition of different brands.

**Golf View Apartments,
Lucknow**
9,77,000 sq. ft.

Premium high-end cluster of 3 & 4 BHK apartments. PMC involved consultation and supervision of the project.

**DG MAP,
Meerut**
3,702,600 sq. ft.

Quality accommodation including all infrastructure facilities for the Armed Forces. Site Sofipur has S1+11 Floors, 2 towers for Junior Command Officers (JCO's) and 34 towers for Other Officers (OR's). Dabatwa site has 1 block for JCO's and 12 blocks for OR's.

**State Guest House with
Commercial Complex,
Vijayawada, A.P.**
1,42,000 sq. ft.

It is a guest house (G+3) with commercial complex (G+10) having green building design feature. The complex is a mixed-use development property with retail space, food court and office area etc.

**Navyug Smart Mini City,
Prayagraj**
5,44,500 sq. ft.

Integrated housing project with 2/3 BHK apartments and 23 towers including one for EWS LIG. Project includes modern features and facilities for smart and sustainable living.

**BIM Consultancy for
Chennai Metro Rail**

As a BIM Consultant, REPL is scrutinizing, managing and ensuring the proper BIM delivery for the civil, architectural, structural, MEP, VAC, etc. Works covering the alignment, stations, tunnels, viaduct & depot works for the entire section of Chennai Metro Rail Project Phase II with 126 stations in 118Km.

**Integrated Check Post,
Sonauli at Indo-Nepal Border**

Master planning and construction supervision. This project will represent India at the international border and will have separate Passenger Terminal Building, Cargo/Warehouse Area and other allied services with an energy-efficient terminal building.



Paarth Arka



Tender Palm Hospital



Integrated Check Post,
Sonauli at Indo-Nepal Border

Township | Commercial Complex | Stadium | Hotel | Hospital

Building Design

Indicative Projects

Medical College at Madanapalle, A.P.
31,80,000 sq. ft.

It is a 500 bedded hospital spread across 75 acres in Chittoor, A.P. facilities like hostel, residential & guest house are part of the project.

Development of 93 Schools in Odisha

Improving infrastructure of 93 schools in Sundargarh, Orissa. REPL is working on DPR that includes designs (architecture/structure), cost estimations etc.

Tulsiani Palacio Imperial White, Lucknow
4,57,000 sq. ft.

Mixed-use development project, provides a whole range of 5-star facilities that combine colonial design with an ultra-modern feel. Contains premium retail outlets, spacious office areas & luxurious residential spaces.

Paarth Arka, Lucknow
19,00,000 sq. ft.

It is a residential group housing project. It provides 40% green landscape area and 35% water saving over IGBC Green House Baseline.

Eklavya Model Residential School, Odisha

Architecture and Engineering Consultancy services for construction of 28 schools in various districts of Odisha. Each school will have capacity of 480 students, from class VI to XII. It will have special facilities for providing training in sports and skill development.

Tender Palm Hospital, Lucknow
1,50,000 sq. ft.

Designed with a friendly feel and playful interior. It has a 100+ bedded hospital, featured with diagnostic center, specialty OPDs, rehabilitation center, OTs, NICU, PICU, ICU, well equipped nursery & IVF center.

Paarth Republic Group Housing, Lucknow
34,84,000 sq. ft.

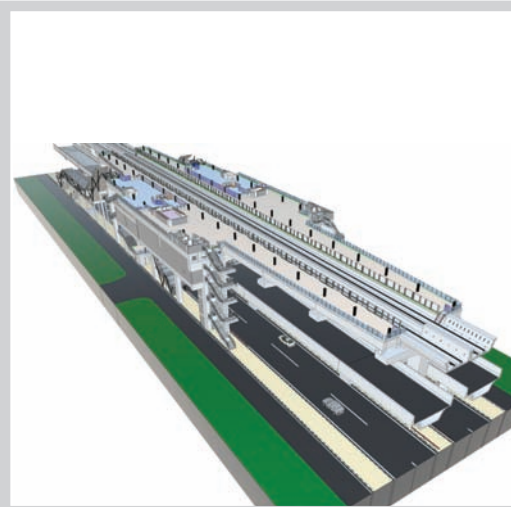
Township having multistoried high rise buildings with mixed usage. Project features include multi-level car parking, sports stadium, club house, etc. Earthquake-resistant RCC structure.

Amenity Block, Candor Techspace, Gurugram
3,00,000 sq. ft.

BIM consultancy for as-built model of existing structure and retrofitted new design changes. Model tracking using simulation and quantity extraction. The block consists of various facilities such as day care centers, retails, food court etc.



Ginger Hotel



Metro Rail, Chennai



Medical College,
Madanapalle, A.P.

PMC in Real Estate

Assisting RERA & Developers for completion of held-up projects through complete PMC offerings. Consultancy services include Designing, Tendering, Contractor/Vendor Management, Cost & Value Management, Liaising & Approvals from Authorities, Site Management, etc. Working on multiple projects of large scale for timely completion and handing over, REPL is also empaneled consultant of UP-RERA.

Indicative Projects

Unitech, Gurugram

PMC of 23 projects including Nirvana Country-II, Uniworld Resorts & others. Consultancy in preconstruction stage includes verification of existing status, foreclosure of existing contracts, preparation of new DPR & tender documents. In post construction phase, activities include completion of design & drawing, monitoring, execution, quality & material checking, billing, MIS etc. Total 3200+ units.

Jaypee Greens Knights Court, Noida

Appointed by UP-RERA as third-party construction consultant. Project has 8 towers with 300+ units. Review of tendering process, review and report on quantum & timelines of construction. Assignment also includes funds utilization and monitoring project quality.

La Palacia, Noida Extension

Group housing project has 4 towers with 400+ units developed by Newtech. Review of tendering process, review and report on quantum & timelines of construction, tracking fund utilization & overall project monitoring.

Casa Grande 2, Greater Noida

Group housing project has 5 towers with 800+ units developed by Earthcon Construction. Review of tendering process, review and report on quantum & timelines of construction, tracking fund utilization & overall project monitoring.

Unibera Towers, Greater Noida

Group housing project has 5 towers with 700+ units developed by Unibera. Review of tendering process, review and report on quantum & timelines of construction, tracking fund utilization & overall project monitoring.



Uniworld Commercial
Tower



La Palacia



The Residences



Sunbreeze



Knights Court



The Close S



Uniworld Garden II



Alder Grove Villa

When perfection integrates with principles, WE ACHIEVE

2021

ISO/IEC 27001:2013
for Information Security
Management System

2019

MSME Registration under
Ministry of MSME, GOI

2018

IPO and listing at
NSE Emerge

2014

WCRC Leaders Asia Award
for Project "Paarth Aadyant"

2014

Brand Excellence Award for
Consistent Achievements &
Contribution in its field

2014

"Most Innovative
Real Estate Consultant
of North India" Award

2011

Be Inspired Awards for
"Water Supply System
for Lucknow City"

2006

ISO 9001:2008 certification
for Quality Management
in Services

2020

Migration to NSE
(Main Board)

2018

ISO 9001:2015 Certificate
for Quality Management in Services

2016

The Economic Times
"Promising Entrepreneurs of
India" Award for CMD-REPL

2014

India's "Most Trusted
Real Estate Brand" Award

2014

AIESAC Excellence Award for
Individual Achievements and
Social Responsibilities

2014

Member of Indian Green
Building Council (IGBC)

2011

Be Inspired Awards for
"Sewerage Network
Project for Lucknow City"



When cause integrates with concern, WE COMMIT



Pradeep Richa Educare Foundation

REPL Group is committed towards actively contributing to the community. The CSR activities are promoted through PREF, founded in 2010. The Foundation is focusing on education and skill building for underprivileged children.

KEY INITIATIVES

- Scholarship for financially weak but meritorious students of class 11th & 12th.
- 'PN Misra Merit Scholarship and Gyanwati Misra Merit Scholarship' for students of class 9th to class 12th.
- 'PN Misra Post-Graduation Merit Scholarship' for MA and MSc student of mathematics in the University of Allahabad.
- Supporting students through 'PREF App'; books, online classes, counselling sessions etc.
- PREF formed the committees for the welfare of students.
- Formed various committees for student's learning & grooming process.



When excellence integrates with reach,

WE CONNECT

Empanelment

- Agra Development Authority
- Bhubaneswar Development Authority
- Bihar Industrial Area Development Authority (BIADA)
- Building Construction Department, Jharkhand
- Centre for Management Development, Kerala
- Chhattisgarh Housing Board For Engineering Services
- Public Health Engineering Dept., West Bengal
- Dept. of Telecommunication (Ministry of Communication)
- Environmental Planning & Coordination Organisation, M.P
- Export - Import Bank of India (Exim Bank)
- Goa State Industrial Development Corporation Ltd. (GSIDC)
- Greater NOIDA Industrial Development Authority
- Gujarat State Police Housing Corporation Ltd.
- Guwahati Urban Development Department
- Hapur Pilkhua Development Authority
- Jaipur Development Authority
- Lucknow Development Authority
- Madhya Pradesh Jal Nigam
- Mathura Vrindavan Development Authority
- Ministry of Urban Development, Govt. of India, New Delhi for Smart Cities, Hriday Scheme & City Development Plan (JNNURM)
- Moradabad Development Authority
- Odisha Urban Infrastructure Development Fund
- Municipal Corporation, Shimla
- Musoorie Dehradun Development Authority
- Planning & Development Department, Govt. of Assam
- Public Works Dept. (R&B), Ladakh, UT
- Puri Municipality, Odisha
- Regional Centre for Urban & Environmental Studies, Lucknow
- Rural Water Supply & Sanitization, Odisha
- Tamil Nadu Housing Board for Architectural Services
- Town Development Department, Govt. Of Jharkhand
- U.P. Project Corporation Ltd., Govt. of Uttar Pradesh
- U.P. RERA
- Uttar Pradesh State Industrial Development Corporation Ltd.
- Uttar Pradesh State Road Transport Corporation
- Uttar Pradesh Tourism
- Uttarakhand Pay Jal Nigam
- Yamuna Expressway Industrial Development Authority, Greater Noida, U.P.

Our Clients

Corporate

- Ansal API
- Continental India Pvt. Ltd.
- Emaar MGF Land Ltd.
- Gannon Dunkerley & Co. Ltd.
- Hyundai Motor India Pvt. Ltd.
- Lakshya Real Infra Pvt. Ltd.
- Omaxe Ltd.

Government

- Andhra Pradesh Medical Services & Infrastructure Development Corporation (APMSIDC)
- Assam State Urban LMS
- Bhopal Municipal Corporation for Smart City
- Building Construction Department, Jharkhand
- Dehradun Smart City Ltd.
- Dept. of Town & Country Planning, Govt. of Karnataka
- DG MAP, Ministry of Defence, Govt. of India
- Directorate of Town & Country Planning, Andhra Pradesh
- Directorate of Tourism, Jammu
- Greater Noida Industrial Dev. Authority
- Gorakhpur Industrial Dev. Authority
- Indore Smart City Development Ltd. (ISCDL)
- Industrial Infra. Dev. Corporation, Gwalior
- Itanagar Smart City Development Corporation Ltd
- Jabalpur Smart City Limited
- Kanpur Municipal Corporation (KMC)
- Kerala Water Authority

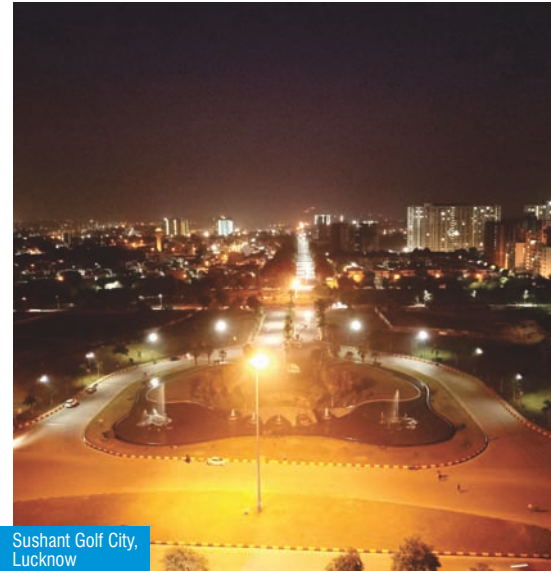
- PACL Ltd.
- Rishita Developers
- Bridge and Roof Co. (India) Limited
- Hindustan Steelworks Construction Ltd.
- Suncity Hi-Tech Infrastructure Pvt. Ltd.
- Sunshine infrastate Pvt. Ltd.
- Tulsiani Construction & Developers Ltd.
- Waterfront Buildcon LLP

- Land Port Authority of India
- Lucknow Development Authority
- Madhya Pradesh Jal Nigam
- Moradabad Smart City Ltd.
- Municipal Corporation Katni, Madhya Pradesh
- Municipal Council, Mandsaur, Madhya Pradesh
- National Building Construction Corporation (NBCC)
- National Highways & Infra. Dev. Corporation Limited (NHIDCL)
- Odisha Mineral Bearing Areas Development Corporation
- Planning & Development Department, Govt. of Assam
- Pune Metropolitan Region Development Authority
- Town & Country Planning Department, Odisha, H.P. Jharkhand, Karnataka & AP
- Town Planning Organisation, Jammu
- Uttar Pradesh Jal Nigam
- Uttarakhand Housing & Urban Development Authority
- Uttarakhand Jal Sansthan
- Varanasi Smart City Development Ltd. (VSCDL)
- Vellore City Municipal Corporation

PROJECT GALLERY



Golf View Apartments,
Lucknow



Sushant Golf City,
Lucknow



Tulsiani Easy in Homes Sohna,
Gurgaon



Lakshya Height,
Ghaziabad



Circuit House at
Rourkela, Odisha



Navyug Smart Mini City,
Prayagraj



Squash Court &
Multi-Purpose Hall, Kanpur



Guest House & Commercial Complex,
Vijayavada, A.P.



High Court,
Ranchi (Design competition)



Smart Library,
Dehradun



Development of
93 schools, Odisha



Hotel Clark Inn,
Lucknow



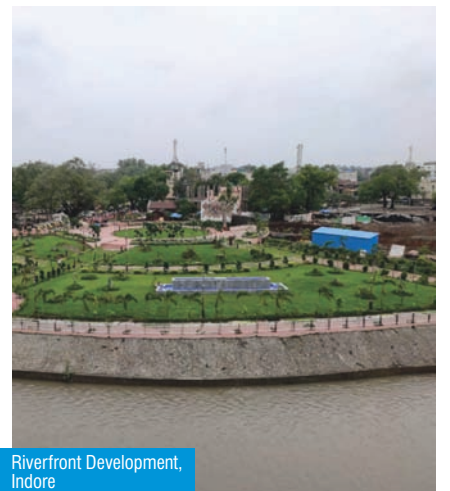
NMBPL Tower,
Lucknow



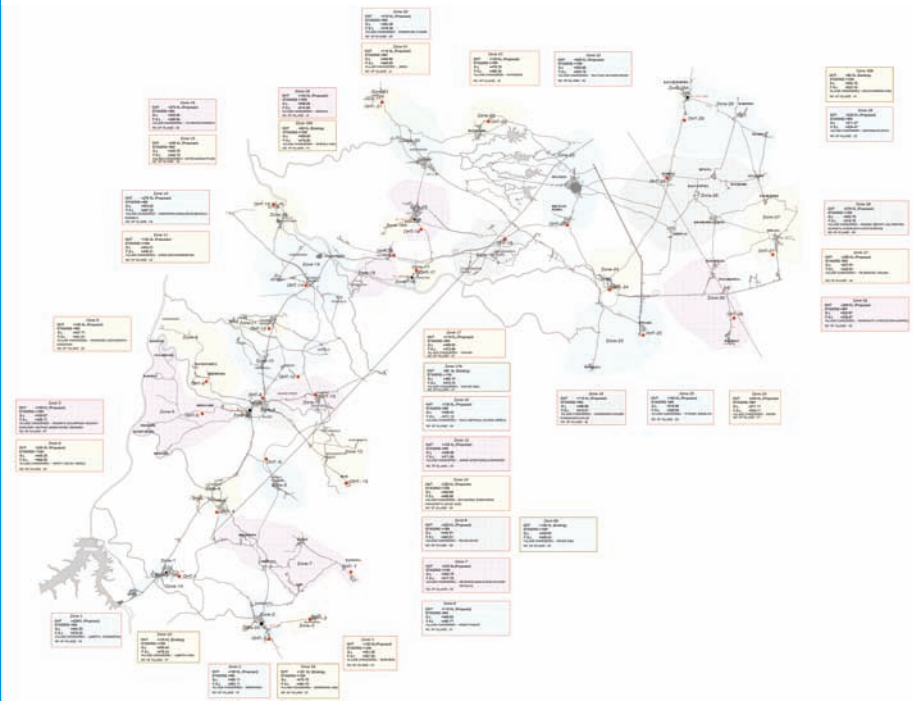
DG MAP, Sofipur,
Meerut



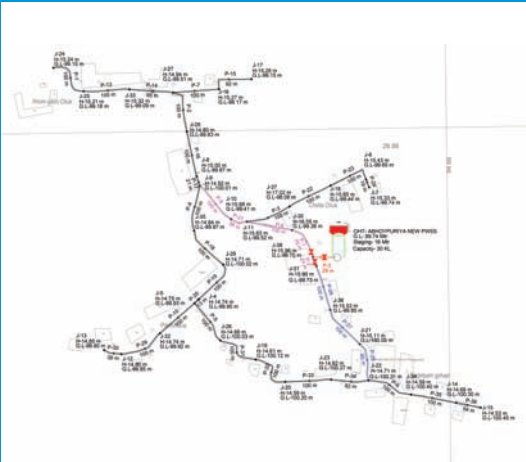
National Highway,
Manipur



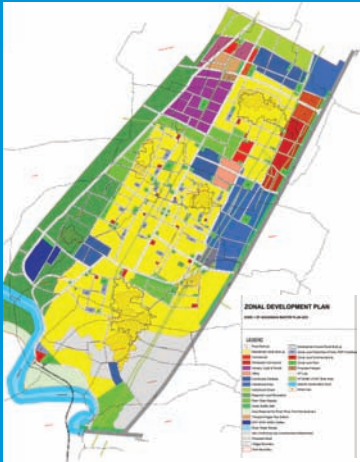
Riverfront Development,
Indore



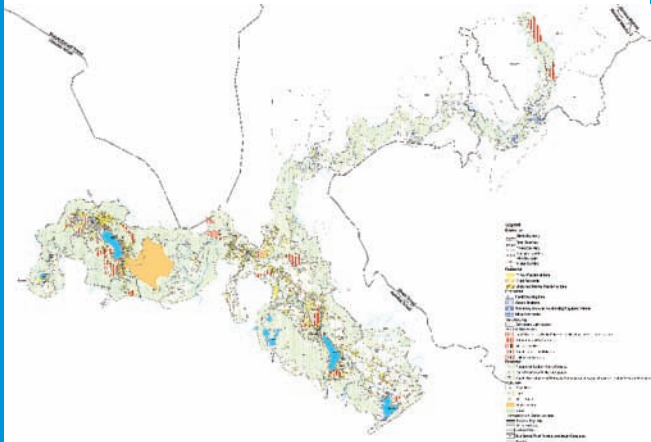
Rajond Group Water Supply Scheme,
Dhar, M.P.



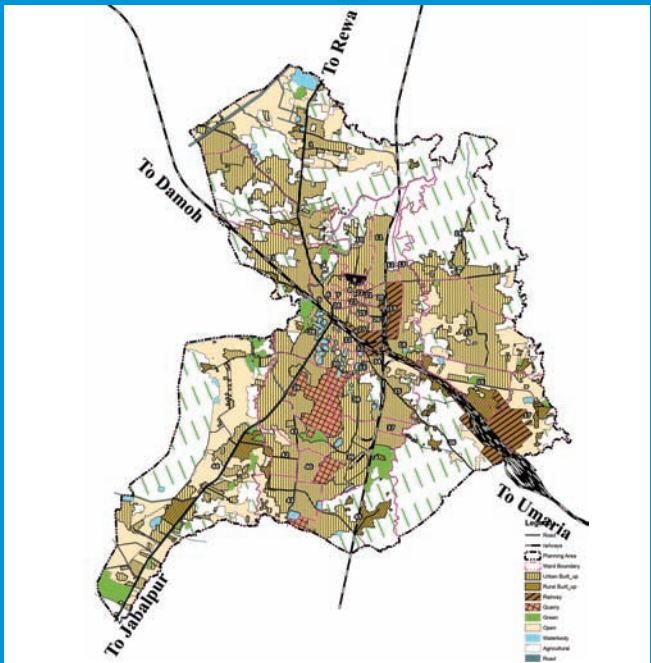
Water Distribution Network Plan - Abhoypuriya,
Nazira, Assam



Zonal Development Plan 2021,
Ghaziabad



GIS basemap of NLRSDA,
Nainital



GIS Based Property Tax Register,
Katni, M.P.



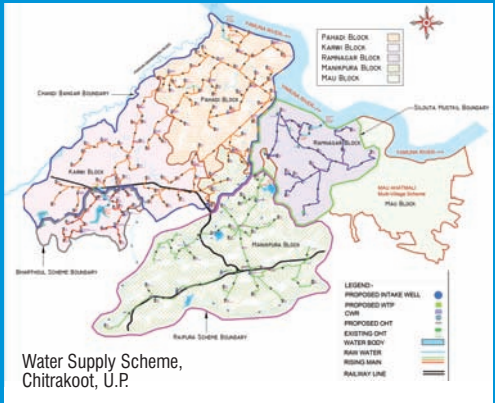
Street Vending Plan,
Haryana



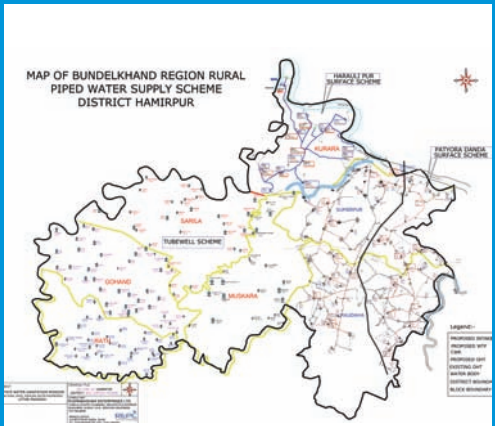
Street Vending Plan,
Bhatinda



Water Distribution Network of Chowdang,
Jorhat, Assam



Water Supply Scheme,
Chitrakoot, U.P.



Water Supply Scheme,
Hamirpur, U.P.

Branch Offices

Noida

A-6, Sector-58, Noida-201 301, India
Ph. No.: +91-120-4022 333

Lucknow

Ground Floor, Yuva Bhawan, YMCA
Campus, 13, Rana Pratap Marg,
Lucknow-226 001, India
Ph. No.: +91-522-4935 900

Project Offices

- Baghpat, U.P.
- Bulandshahr, U.P.
- Chennai, Tamil Nadu
- Ghaziabad, U.P.
- Hyderabad, Telangana
- Haldwani, Uttarakhand
- Katwa, J&K
- Itanagar, Arunachal Pradesh
- Mumbai, Maharashtra
- Pune, Maharashtra
- Resai, J&K
- Samba, J&K
- Tengnoupal, Manipur



Rudrabhishek Enterprises Limited

CIN: L74899DL1992PLC050142

820, Antriksh Bhawan, 22, K.G. Marg,
Connaught Place, New Delhi-110 001. INDIA
Ph. No.: +91-11-4106 9500, 4350 9305

marcom@repl.global | www.repl.global

