



Viability
Analysis



Infrastructure
Services



Urban
Planning



GIS



Structural &
Service Design
(MEP)



Building and
Area Design



Building
Information
Modeling



RERA
Consultancy



PMC, SQC
& TPI



Water
Infrastructure

WE
PLAN...
WE
DELIVER...

About REPL

With a legacy of more than 30 years, REPL has become an established brand in the domain of Urban Development & Infrastructure Consultancy. The Group has successfully planned and delivered complex assignments of diverse nature for urban transformation. The variety of projects include - Residential, Commercial, Group Housing & Integrated Township projects, Hospitals, Hotels & Recreational facilities, Water Supply, Sewerage & Sanitation Systems, Regional Plans and Master Plans, Roads & Highways.

We cover the advisory, planning, designing and project management aspects to provide holistic solutions to a range of clientele from across the public and private sectors. REPL is extensively associated with GOI's flagship programs such as Smart Cities, AMRUT 2.0, PMAY, JJM, DAY-NULM, PMGSY & Skill India Mission at multiple locations under various capacities. Our strength lies in integrating a range of services and providing end-to-end solutions to our clients. Group companies include RTCPL, RIPL, RAD and RGEPL. REPL is also the Investment Manager of ImpactR SM REIT, only the second company in the country to obtain this license from SEBI.

Mr. Pradeep Misra

CMD – REPL

Mr. Misra has proven track record of industry leadership and entrepreneurial abilities. He has built up and nurtured many institutions, steered companies to market leadership positions and played crucial roles in large scale construction and consultancy projects.



Salient Features

End-to-End Solutions / *Listed at NSE* / *30+ Empanelment* / *ISO 9001:2015 Certified* / *Using latest technology like BIM*

Focus Areas



Smart Cities

(ABD & Pan City Solutions)



Planning & GIS

(Regional Plan, Development Plan, Master Plan & Zonal Plan)



Infrastructure

(Roads & Highways, Metro, Check Post)



Water

(Water Supply, Sanitation, Sewerage)



Real Estate

(Residential, Commercial, Group Housing & Integrated Township Projects)



Retail

(Malls & Office Complexes)



Hospitality & Healthcare

(Hotels & Hospitals)



Education

(Schools, Institutes & Universities)



Recreation

(Sports Stadium & Amphitheatre)



RERA Advisory

(Developer, Investor & RWAs)

Indicative Projects

Smart Cities

Project Management Consultancy for Smart Cities on ABD (Area Based Development) and Pan City solutions. Design, Develop, Implement and Manage the entire project including DPR on various components viz. water supply, intelligent traffic management, integrated command control center, smart security, heritage conservation, roads & junction improvement etc.

Varanasi

1389 Acres ABD

Indore

742 Acres ABD

Kanpur

1475 Acres ABD

Dehradun

875 Acres ABD

Moradabad

1260 Acres ABD

Itanagar

270 Acres ABD

Jabalpur

743 Acres ABD

Vellore

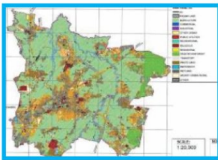
Phase II,
Package 02

Madurai

UGSS

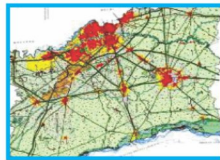
Urban Planning & GIS

It includes Feasibility Study, Urban Policy Plans, Regional Plans, Zonal Plans, GIS Based Master Plans, Redevelopment Plans, Slum-free City Plans, City Sanitation Plans, City Development Plans, Industry Area Development Plans, Future Land Use Plans, Social Economy Survey & Analysis etc. Areas covered are Maharashtra, U.P., A.P., M.P., H.P., Rajasthan, Uttarakhand, Bihar, Karnataka, Delhi etc.



Master Plan

Various Towns of Odisha



Sub-Regional Plan - U.P.

Delhi-NCR



City Sanitation Plan

Various Towns of M.P.



Street Vending Plan

Bathinda

PMAY-HFAPoA: DPR & PMC

Consultancy includes Demand Survey, Beneficiary Identification & Geo Tagging, DPR, Architectural/Engineering Designs, Drawings & Estimations and PMC in multiple states consisting of U.P. (128 towns), Rajasthan (10 towns), Bihar (60 towns), M.P. (2 towns), H.P. (10 towns) & Pune (9 talukas).



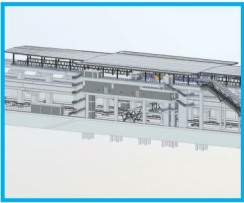


Infrastructure

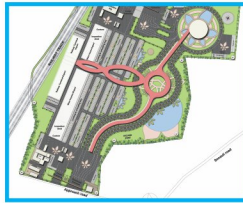
Consultancy varies from small to complex projects including Roads & Highways, Metro Rail, Tourism Sites Development, Integrated Check Post, ICT, Smart Transportation etc.

Water

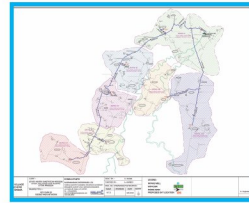
Project includes Water Supply Scheme, Sewerage Scheme, Storm Water Drainage, Rain Water Harvesting, Water Treatment Plant, Sewage Treatment Plants, Storm Water Drainage etc. We provide DRP, PMC, SQC, and TPI services.



Chennai Metro Rail Phase 2
BIM Consultancy



Integrated Check Post
Sonauli Border



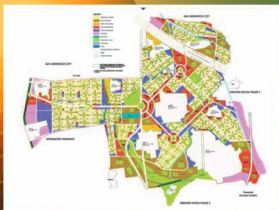
Water Supply Scheme
Bundelkhand Region, U.P.

Hi-tech Townships

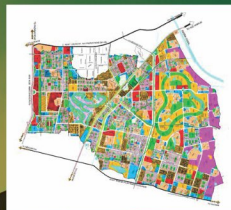
REPL has cross functional teams to efficiently deliver the consultancy on Hi-tech Townships, which includes developing and designing the layout plans, Infrastructure services such as Sewerage, Drainage, Water Supply, Rainwater Harvesting, Roads, electrical substations, Landscape Design, Traffic Design, Feasibility Reports, GIS Mapping, DPRs etc.

Industrial Area Development

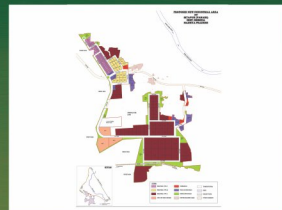
Our experts offer tailored solutions to optimize industrial area's infrastructure, operations, and sustainability. From site assessment and strategic planning to regulatory compliance and infrastructure design, we provide a comprehensive suite of services that will transform your industrial area into a thriving hub of productivity.



Wave City Hi-tech Township
Ghaziabad



Sushant Golf City
Lucknow



Industrial Area Pahadi
District Morena, M.P.

Real Estate [Design & PMC]

Providing end - to - end building and area design services that include Architecture, Structural Design, Service Design (MEP) and PMC. Projects consist of Residential Townships, Commercial Complexes, Malls, Hotels, Hospitals, Educational Institutions, Affordable Housing etc.

Residential



**Golf View Apartments
(Tulsiani)** Lucknow



Paarth Republic
Lucknow



DG MAP
Meerut



Paarth Arka
Lucknow

Hospitality & Health Care



Tender Palm Hospital
Lucknow



Medical College
Andhra Pradesh



Ginger Hotel
Lucknow



NMBPL Imperial Avenue
Lucknow

Commercial



Vrindavan Shopping Complex
Lucknow



Tulsiani Grace
Prayagraj



Victory Wall Arcade
Lucknow

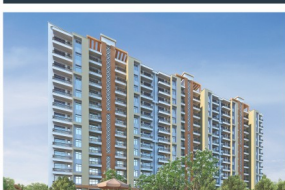


**Tulsiani Palacio Imperial
White** Lucknow

Affordable Housing



Canary State
Lucknow



Navyug Smart Mini City
Prayagraj



Tulsiani Easy In Home
Gurugram

Additional Projects

Infrastructure & Planning

Project Name	Area in Hectare
DPR for Water Supply Scheme, Badrinath Dham	
Authority's Engineer for Implementation of JJM Projects in Odisha (13 blocks)	
AMRUT 2.0 in 20 ULBs of M.P.	
DPR for 27 Water Supply Schemes, Katwa Sub-Division, West Bengal	
TPI & QM for JJM Projects in 10 Districts of Jammu Province	
21 DPR for Water Supply Schemes, Jalpaiguri, West Bengal	
177 Rural Water Supply Scheme for Nazira & Jorhat Division, Assam	
Systematic end-to-end implementation of PMAY for Pune	
Madikheda & MadiaMulti Village Scheme, M.P.	
BIM Consultancy for Chennai Metro Rail, Phase 2	118.90 Km in length
Functional Plan on Education & Skill Development for National Capital Region	55,08,300
Development Plan for Chennai Outer Ring Road Growth Corridor	
GIS-based Comprehensive Development Plan / Master Plan for 12 Towns Odisha	
GIS based Master Plans 2041 in Uttarakhand	
City Development Plan, Meerut	2,55,900
Street Vending Plan – Jharkhand, Assam, U.P., Haryana, Punjab, Tamil Nadu	
GIS based Property Tax Register with Multipurpose Household Survey, Katni, M.P.	
Master Plan 2041 for Greater Noida	38,000
GIS based Asset Mapping of electricity distribution network & Consumer Indexing, JBVNL, Jharkhand	
GIS-based Master Plans for 3 Cities of Karnataka under AMRUT	
GIS based Master Plan & Sectoral Plan for Industrial Corridor Dhuriyapar, U.P.	2225.7

Real Estate

Project Name	Area in Sq. Ft.
Omaxe Residency, Lucknow	6,04,613
Tulsiani Easy In Homes, Sohna Road, Gurgaon	2,04,320
Canary State, Lucknow	356425.1
DG-MAP, Meerut	
Victory Walk Acrade, Lucknow	18,460
Amenity Block, Candor Techspace, Gurugram	
Integrated Check Post, Sonauli at Indo-Nepal Border	
Industrial Corridor Dhuriyapar, U.P.	
New Industrial Area Pahadi, M.P.	
Sarvottam Megapolis Hi-Tech City, Dadri	
Wave City Hi-Tech Township, NH-24, Ghaziabad	
Ginger Hotel, Lucknow (72 rooms)	33,280
Circuit House at Rourkela, Odisha	
Hotel Clark Inn, Lucknow	7,50,000
State Guest House with Commercial Complex, Vijayawada, A.P.	
Tender Palm Hospital, Lucknow (75-bed)	1,50,000
Medical College at Madanapalli, A.P.	
28 Eklavya Model Residential Schools in Odisha	
UNITECH, Gurugram	
Jaypee Greens Knight Court, Noida	
Flats under Ashray Yojna, Mumbai	2450+ Tenements

* All areas are mentioned in approximation.



Rudrabhishek Enterprises Ltd.

CIN: L74899DL1992PLC050142

820, Antriksh Bhawan, 22, K.G. Marg, Connaught Place, New Delhi-110 001. INDIA

+91-11-4106 9500, 4350 9305 | marcom@repl.global | www.repl.global | +91-9958285353